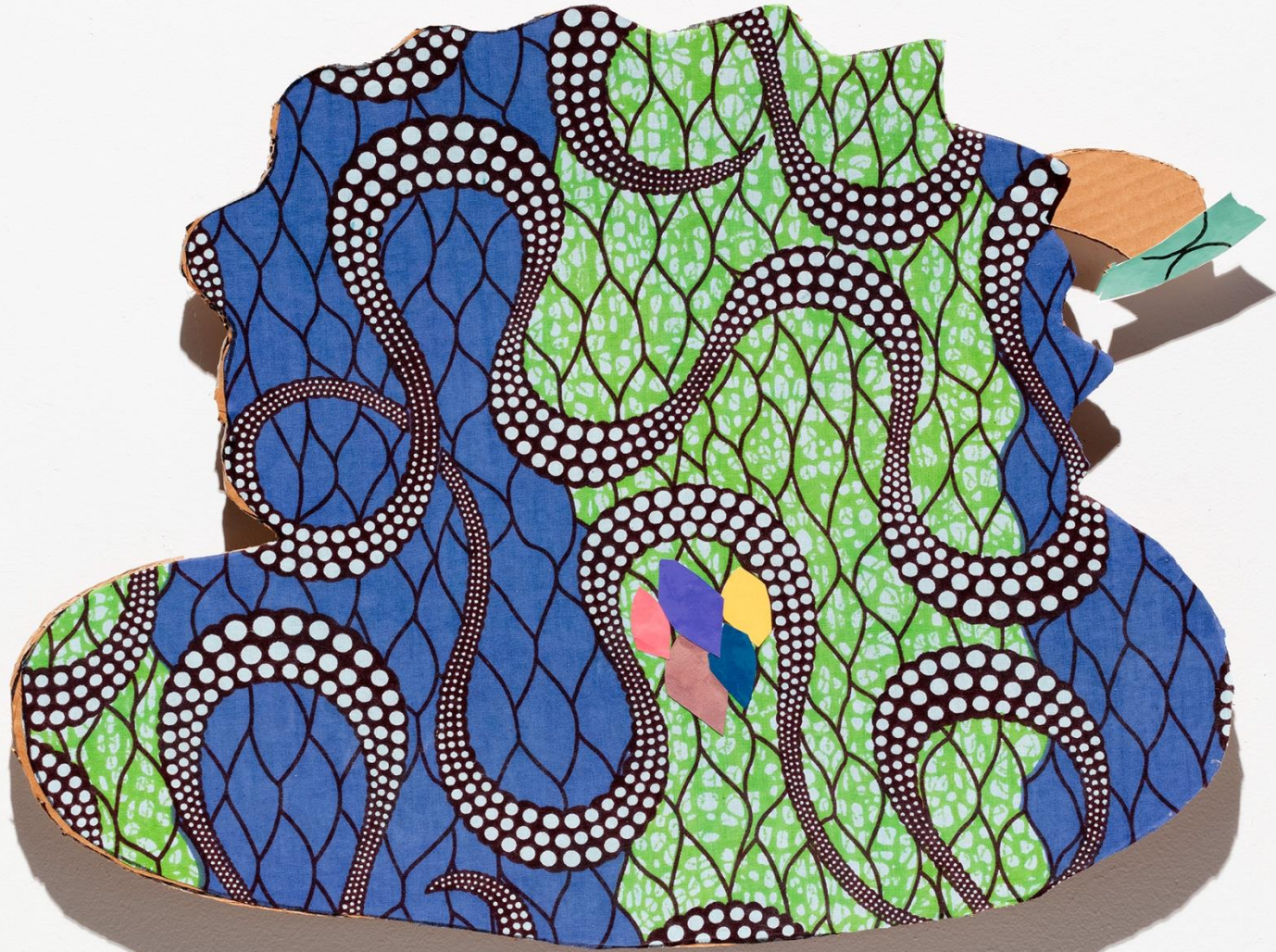
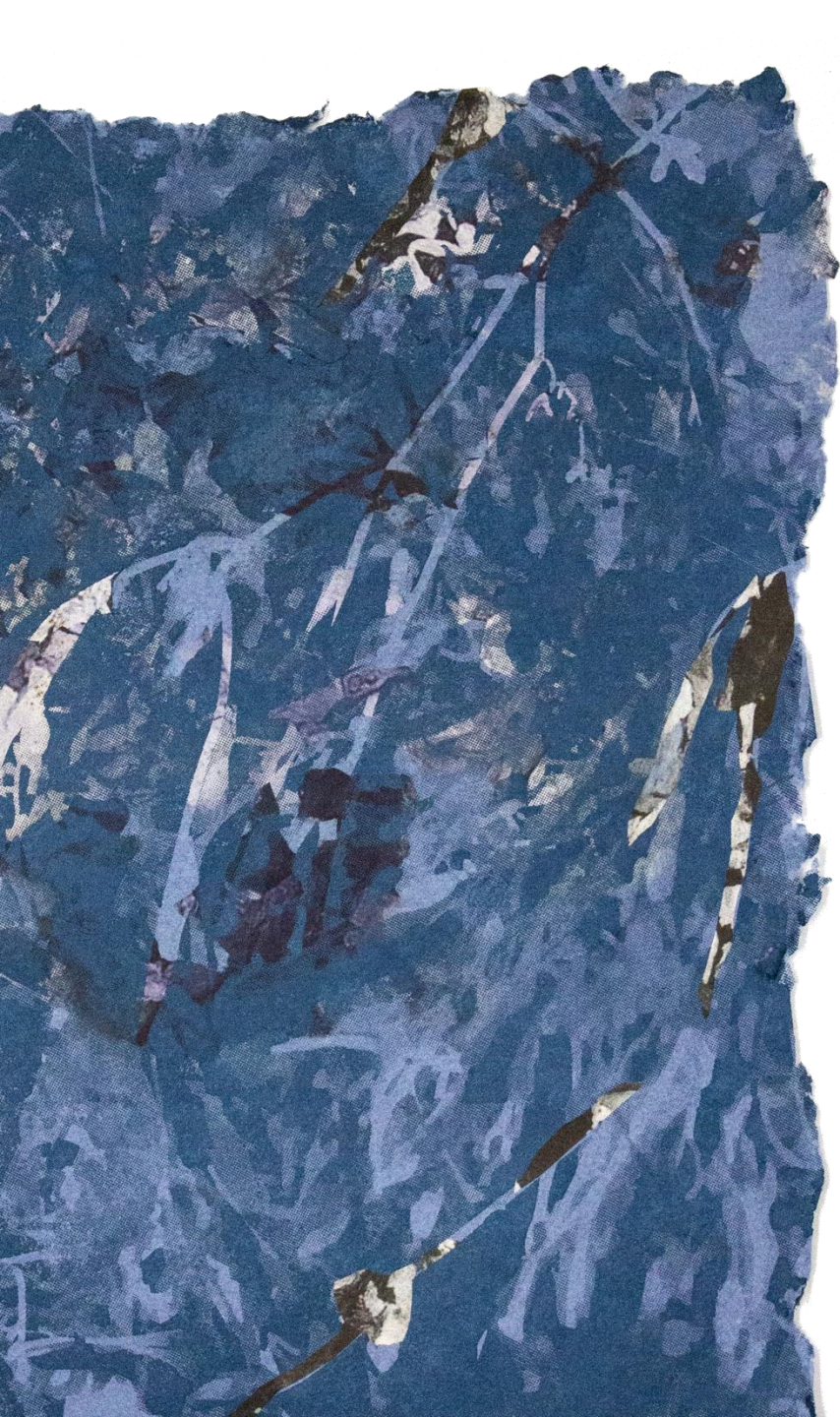


IFPDA FAIR

INTERNATIONAL FINE PRINTS & DRAWINGS ASSOCIATION



GOYA CONTEMPORARY
GOYA-GIRL PRESS



GOYA CONTEMPORARY GALLERY BOOTH A-5

IFPDA FAIR

Park Avenue Armory
643 Park Avenue, New York, NY
www.fineartprintfair.org

VIP Preview

Thursday, April 9, 2026, 5 pm – 9 pm

Public Hours

Friday, April 10, 2026, 11 am – 7 pm
Saturday, April 11, 2026, 11 am – 7 pm
Sunday, April 12, 2026, 11 am – 5 pm

FOR INQUIRIES:

gallery@goyacontemporary.com
Office: 410-366-2001
Fair: 443-850-1015

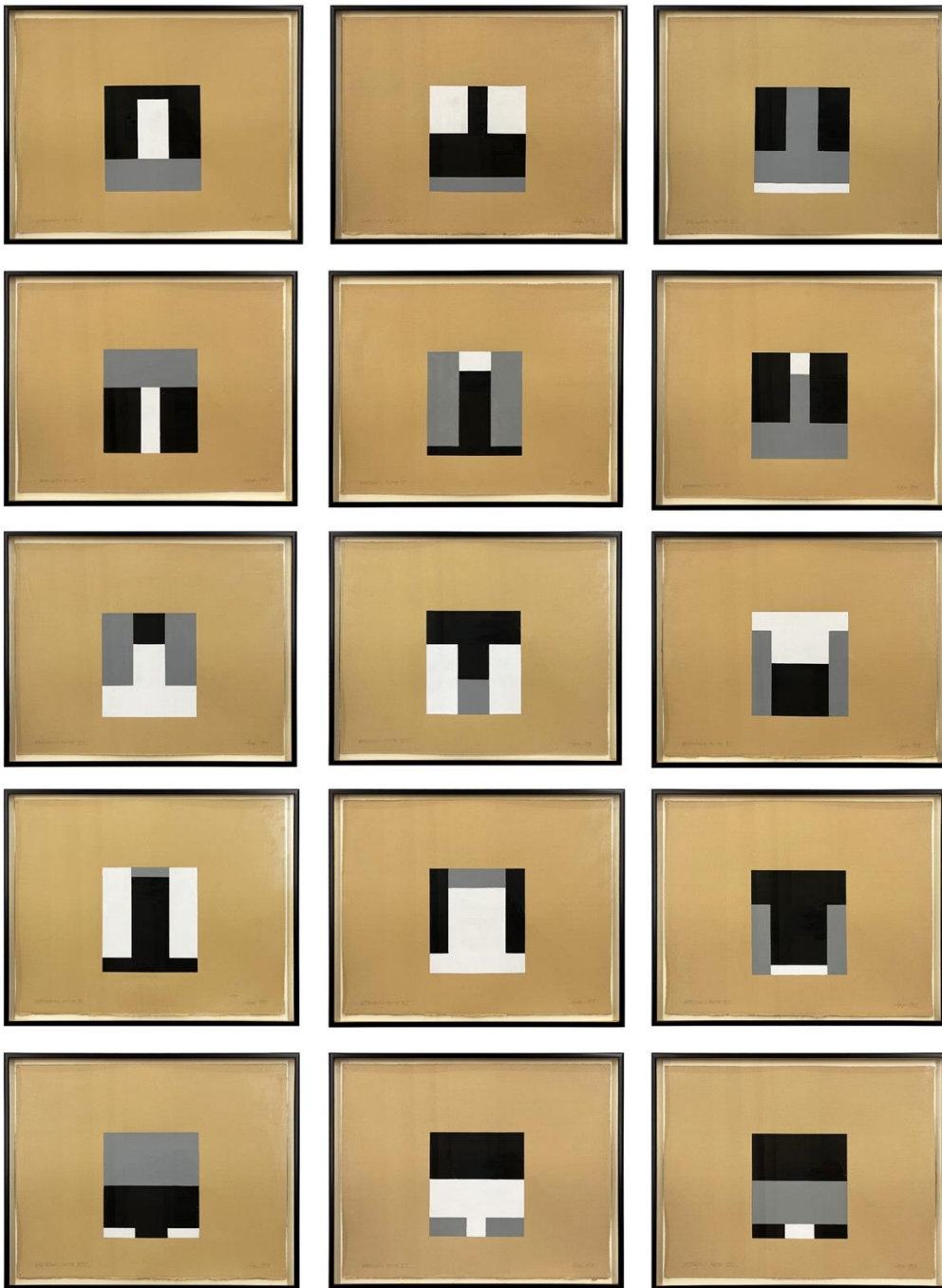
Goya Contemporary | Goya-Girl Press

3000 Chestnut Avenue, Mill Centre #214, Baltimore, MD 21211

www.goyacontemporary.com
Instagram: [@goya_contemporary_gallery](https://www.instagram.com/goya_contemporary_gallery)

Image pictured left: detail of Soledad Salamé, *In the Ocean III*, 2026

Cover image: Jo Smail, *Mongrel Collection #30*, 2018, mixed media on panel, 17.5 x 23 in.



Timothy App

Germanic Suite, 1998

Acrylic on paper

Paper: 11 x 14 inches each

Frame: 12.2 x 15.2 inches each

Timothy App

Squaring I and II, 1975

Acrylic on paper

Paper: 19.75 x 20 inches

Frame: 22.1 x 22.1 inches



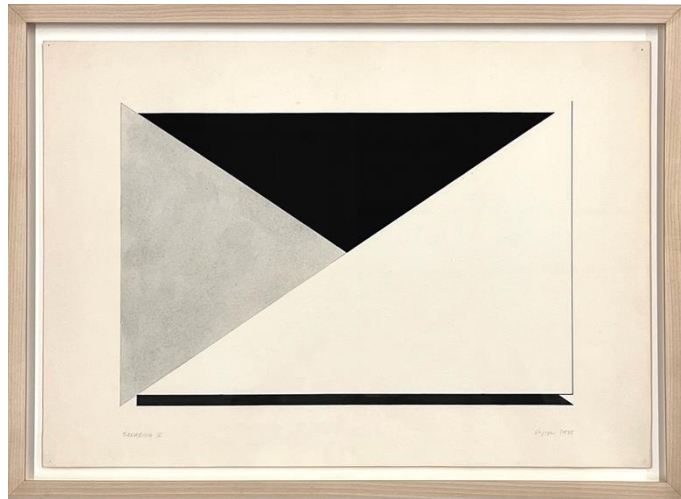
Timothy App

Squaring V and VI, 1975

Acrylic on paper

Paper: 13.75 x 20 inches

Frame: 16.1 x 22.1 inches





Timothy App

Untitled X, 2004

Acrylic on paper

Paper: 22.5 x 30 inches

Frame: 24.75 x 32.25 inches



Timothy App

Untitled VIII, 2004

Acrylic on paper

Paper: 22.5 x 30 inches

Frame: 24.75 x 32.25 inches



Thomas Bogaert
Silver Contour, 2014
Film still and resin on canvas
11.75 x 13.75 inches



Thomas Bogaert
Yellow Roof, 2014
Film still and resin on canvas
15.7 x 19.6 inches



Louise Bourgeois

To Hide, 1989-93

Drypoint

Paper: 19.5 x 14 inches

Frame: 24 x 18.25 inches

Edition 40 of 44



Sonya Clark

Confederate, Surrender, 2022

Mixografia print on handmade paper

Paper: 43.75 x 23.25 inches

Frame: 46.5 x 27 x 2.4 inches

Edition of 30



Sonya Clark

The Huest Eye, 2023-2024

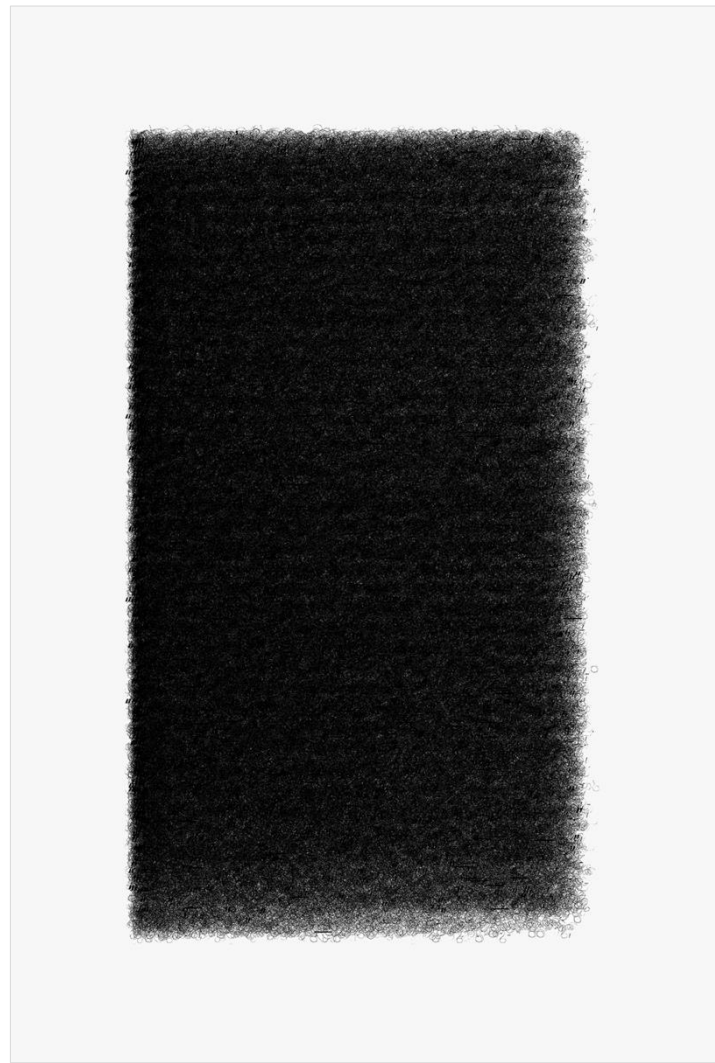
Embroidered thread on Rives BFK paper

Paper: 36 x 24 inches

Frame: 38.75 x 26.5 inches

Edition of 12

Published by Goya Contemporary / Goya-Girl Press



Sonya Clark

The Bluest, Twisted, 2023-2024

Lithograph on Rives BFK paper

Paper: 36 x 24 inches

Frame: 38.75 x 26.5 inches

Edition of 30

Published by Goya Contemporary / Goya-Girl Press



Louise Fishman
Untitled, 2005
Acrylic on corrugated paper
Paper: 30.4 x 38 inches
Frame: 36.6 x 44.4 inches

Frank Gehry

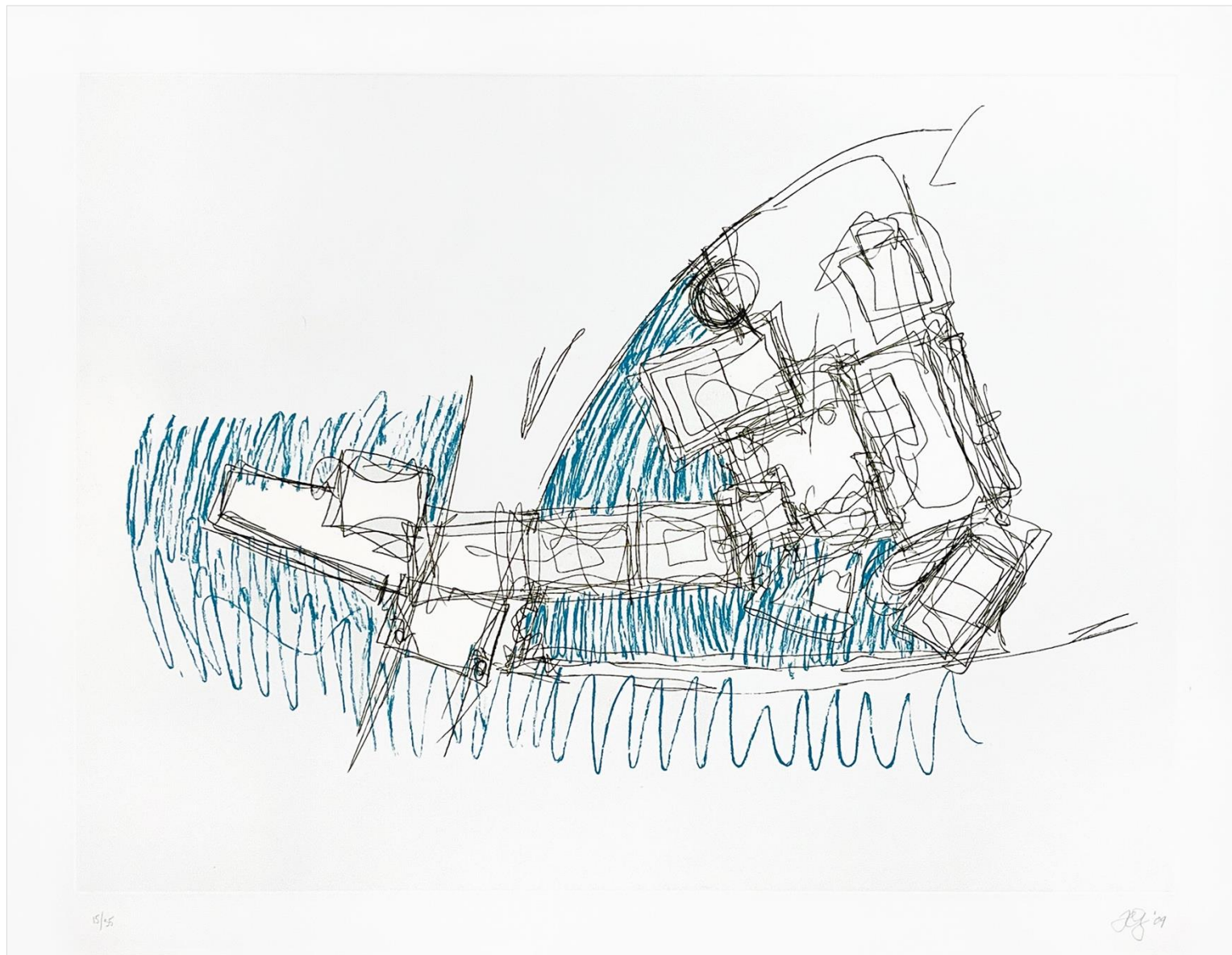
Guggenheim Museum Bilbao, 2009

Two color etching

Paper: 27.5 x 35.5 inches

Frame: 30 x 38 inches

Edition 15 of 35





Sam Gilliam

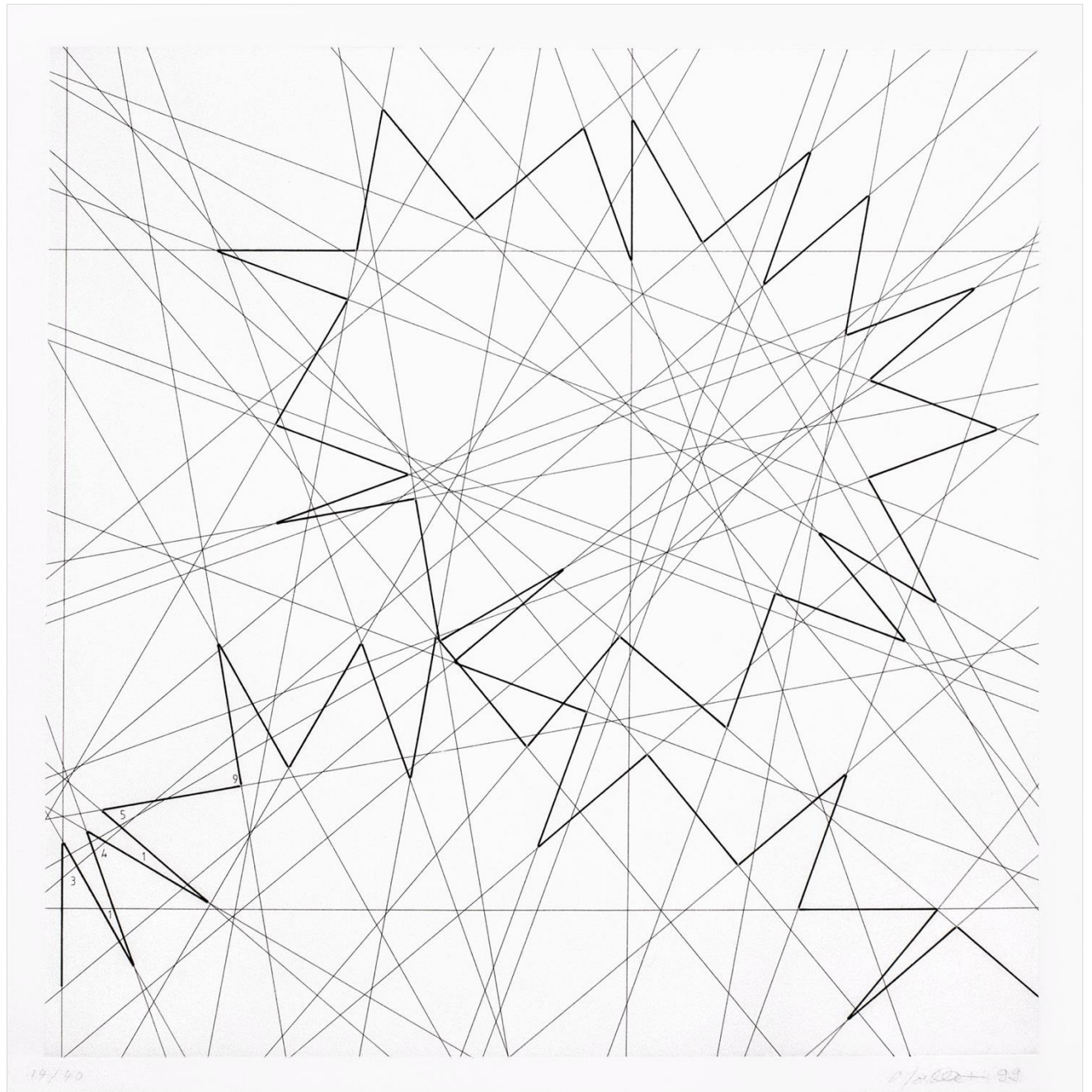
Study III Blue Nile, 1972

Mixed media on paper

Left object: 14.6 x 10.25 inches

Right object: 11.9 x 17.6 inches

Frame: 20 x 33.25 inches



François Morellet

Pi piquant, 1999

Etching

Paper: 23.5 x 23.4 inches

Frame: 28.5 x 28.5 inches

Edition 14 of 40



Amalie Rothschild

Archimedean Pi, 1982

Cast handmade paper

Paper: 20 x 20 x 2.5 inches

Plexiglas: 24.4 x 24.4 x 4 inches



Amalie Rothschild

Still Life, 1982

Cast handmade paper

Paper: 22 x 22 x 1.25 inches

Plexiglas: 26.5 x 26.5 x 2.6 inches



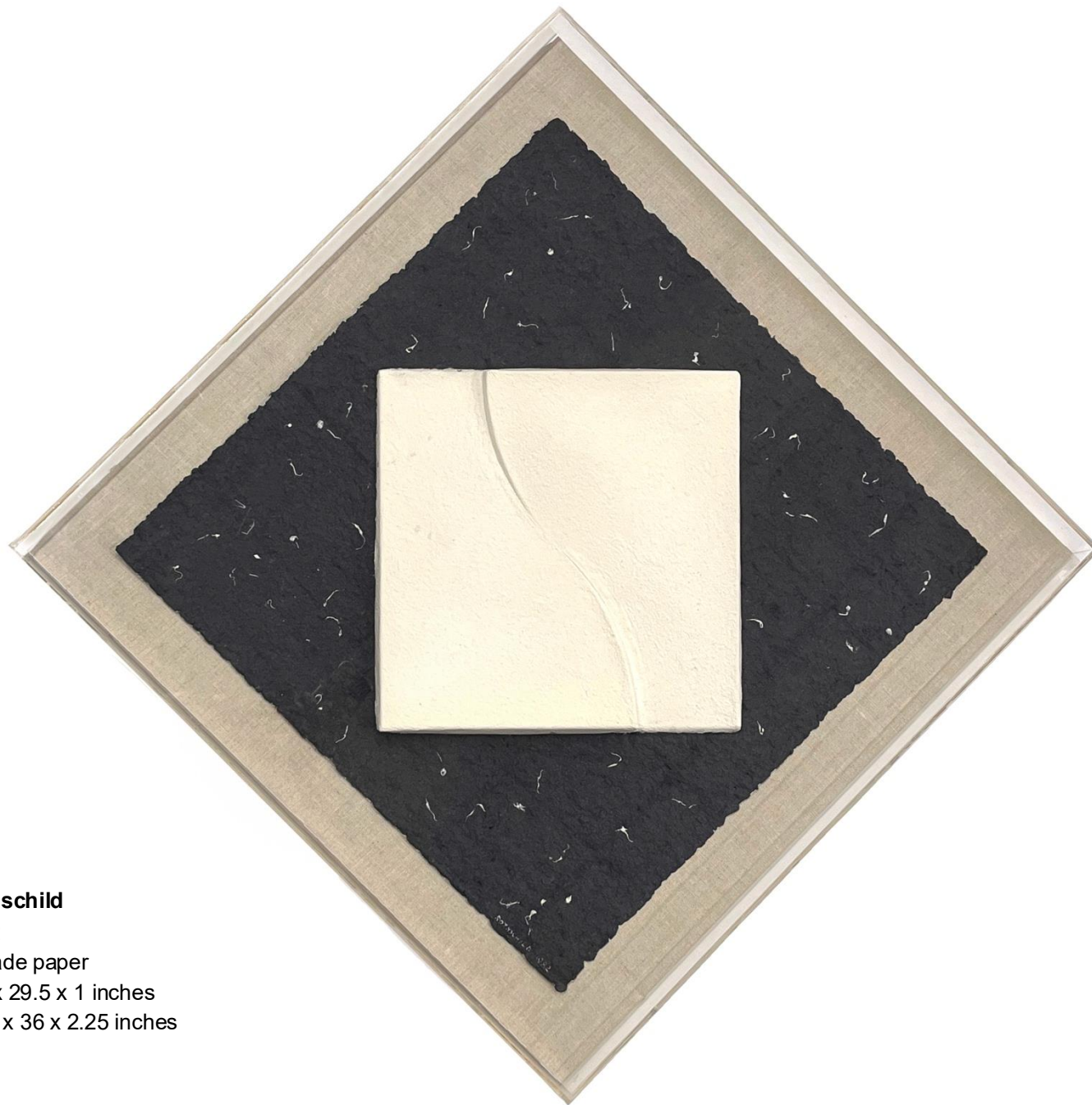
Amalie Rothschild

Io, 1982

Cast handmade paper

Paper: 24.25 x 24.25 x 2.5 inches

Plexiglas: 28.4 x 28.4 x 3.75 inches



Amalie Rothschild

Duo W, 1982

Cast handmade paper

Paper: 29.5 x 29.5 x 1 inches

Plexiglas: 36 x 36 x 2.25 inches



Amalie Rothschild

Josepha, 1983

Cast handmade paper on linen

27 x 25.5 x 1.75 inches



Amalie Rothschild

Girl on Stool, 1956

Ink on paper, double-sided

Paper: 17 x 14 inches

Frame: 20.3 x 17.9 inches



Amalie Rothschild

Model, 1962

Ink on paper

Paper: 17 x 14 inches

Frame: 21.8 x 16.9 inches



Amalie Rothschild

Dawn's Early Light, 1997

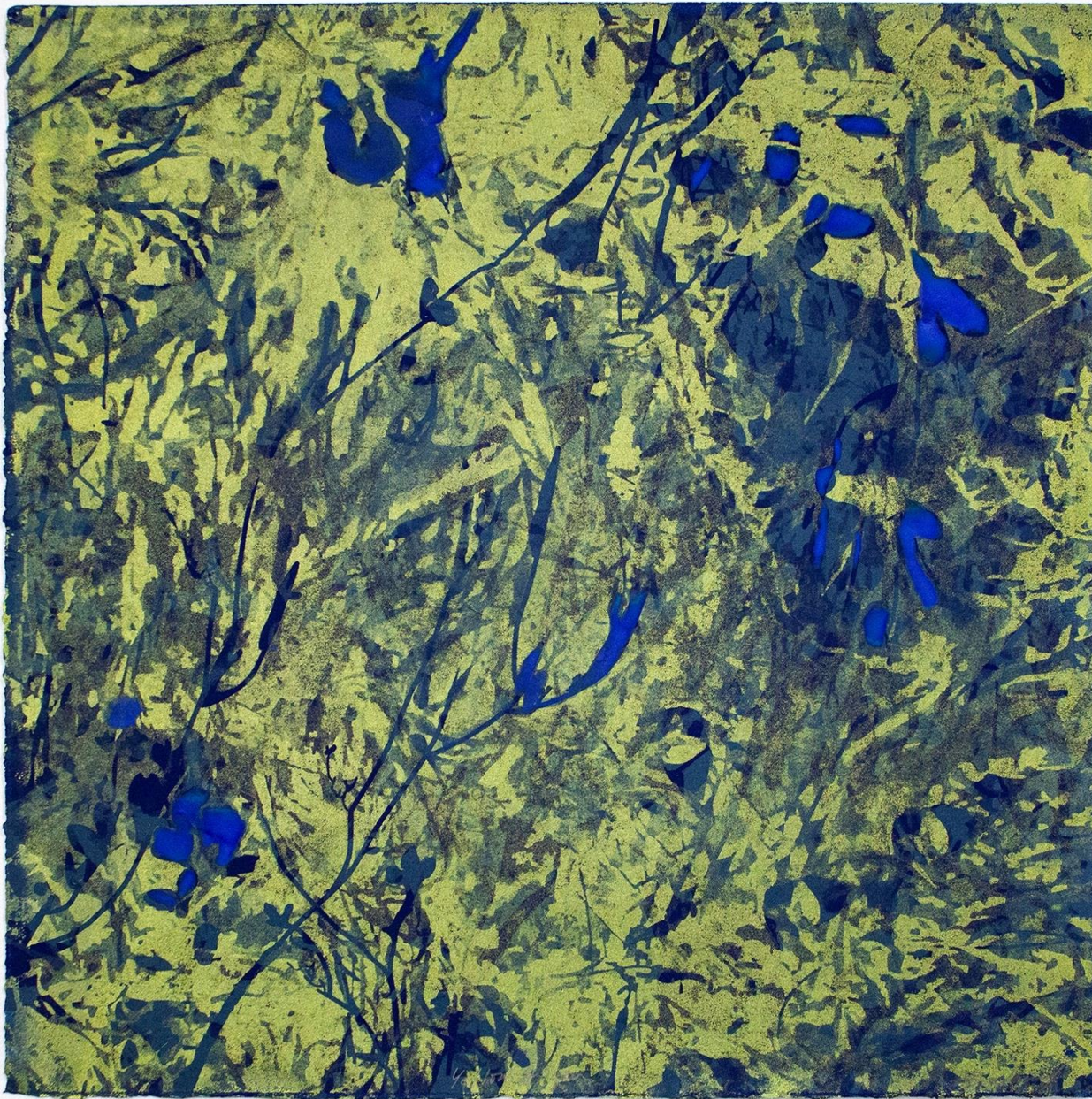
Lithograph

Paper: 18 x 24 inches

Frame: 23 x 29 inches

Edition of 20

Published and printed by Goya Contemporary / Goya-Girl Press



Soledad Salamé

Yellow Algae, 2025

Silkscreen and hand painting on

Rives BFK paper

Paper: 19 x 19 inches

Frame: 23 x 23 inches

Edition 1 of 1

Soledad Salamé

Blue Algae, 2025

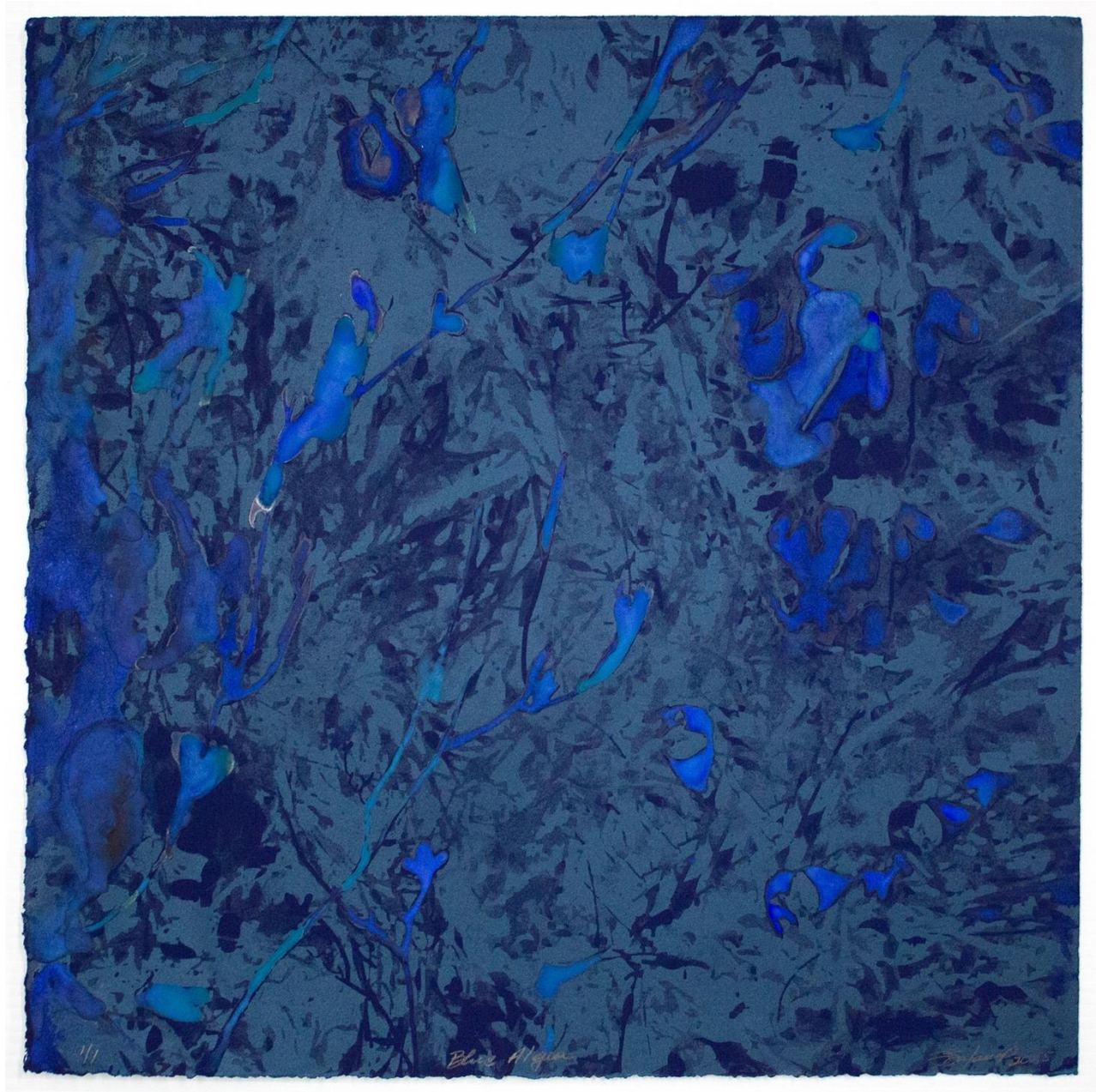
Silkscreen and hand painting on

Rives BFK paper

Paper: 19 x 19 inches

Frame: 23 x 23 inches

Edition 1 of 1





Soledad Salamé

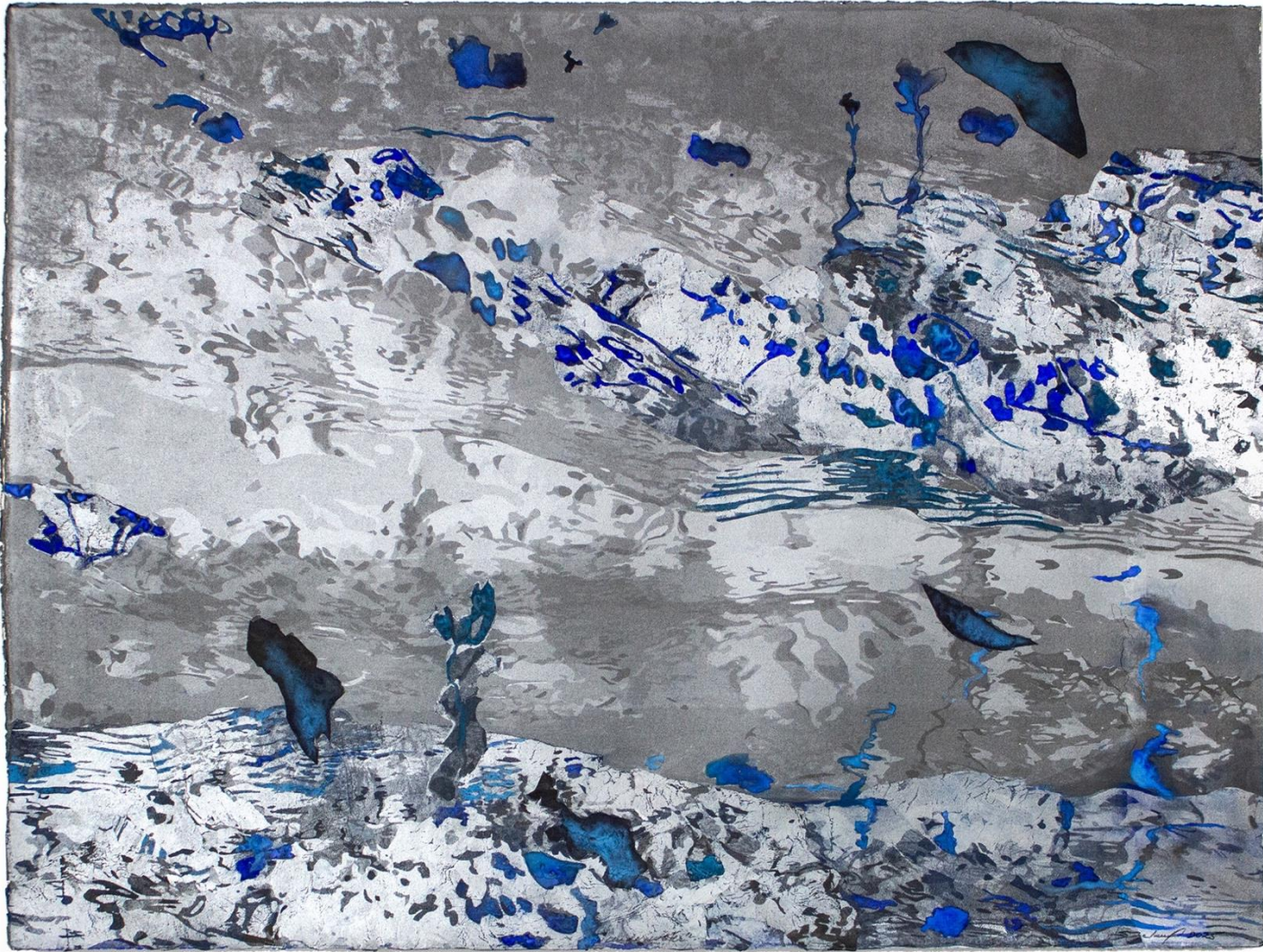
In the Ocean III, 2026

Silkscreen on handmade paper, jeans pulp

Paper: 14 x 10.5 inches

Frame: 19.75 x 15.75 inches

Edition 1 of 1



Soledad Salamé

Under Water, 2025

Silkscreen, hand painting, chine collé

Paper: 22.25 x 29.75 inches

Frame: 26.4 x 33.75 inches

Edition 1 of 1

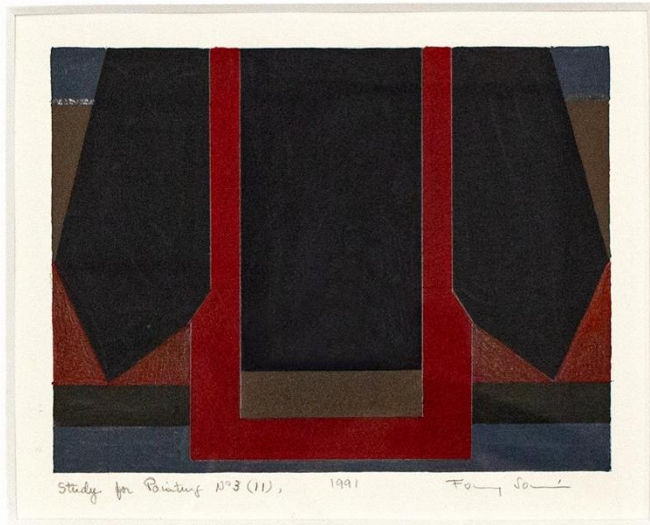


Fanny Sanín

Study for Painting No. 2 (5), 1989

Acrylic on Paper

13.9 x 17.9 inches



Fanny Sanín
Study for Painting No. 3 (11), 2001
Acrylic on Paper
17.25 x 18.5 inches



Fanny Sanín
Study for Painting No. 3 (1), 2001
Marker and colored pencil on paper
18.8 x 20.8 inches



Fanny Sanín
Study for Painting No. 1 (3), 2021
Acrylic on Paper
19.3 x 18 inches



Fanny Sanín
Study for Painting No. 3 (8), 1997
Acrylic on Paper
18 x 22 inches



Joyce J. Scott

Soul Erased Series, 1999

Lithograph with screen printing, embossing, and hand work

Paper: 30 x 22 inches each

Frame: 33 x 25.25 inches each

Edition of 20

Published by Goya Contemporary / Goya-Girl Press

Soul Erased titles, left to right

1. *He Seems Different*

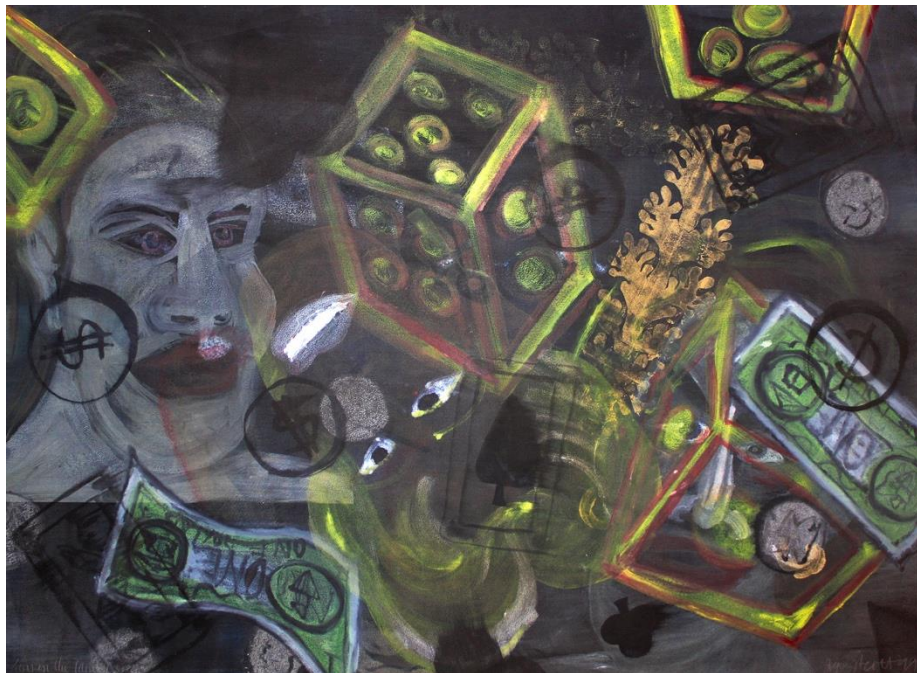
2. *Scomed, He Implodes*

3. *Guns as Angel's Wings*

4. *Repent*

5. *He Still Thinks He's Right*

6. *Soul Erased*



Joyce J. Scott

Runs in the Family, 1999

Monotype with handwork on Somerset Velvet paper

Paper: 29.5 x 39.5 inches

Frame: 31.1 x 41.6 inches

Edition 1 of 1

Published by Goya Contemporary / Goya-Girl Press



Joyce J. Scott

Dice Baby 3, 1999

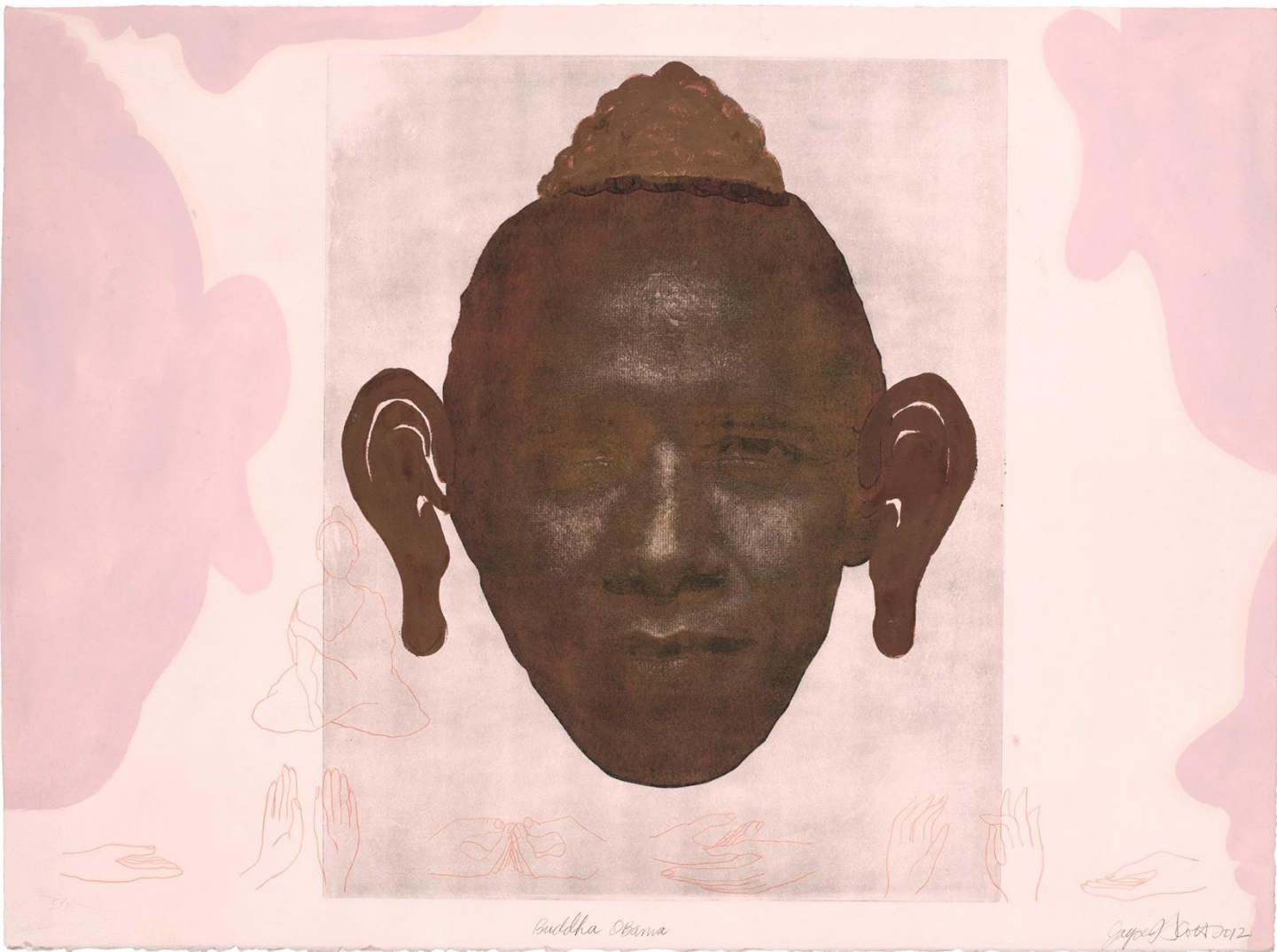
Monotype with handwork on Somerset Velvet paper

Paper: 29.5 x 39.5 inches

Frame: 31.1 x 41.6 inches

Edition 1 of 1

Published by Goya Contemporary / Goya-Girl Press



Joyce J. Scott

Buddha Obama, 2012

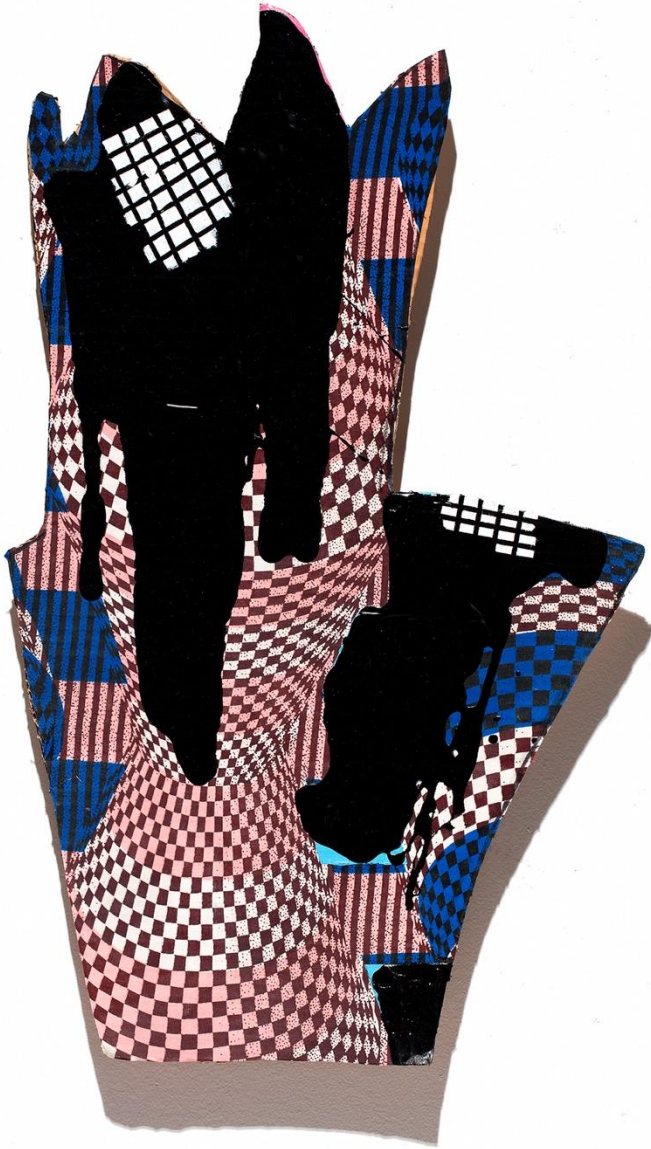
Monoprint from the Obama Series on Rives BFK paper

Paper: 22 x 30 inches

Frame: 25.75 x 33.5 inches

Edition 1 of 1

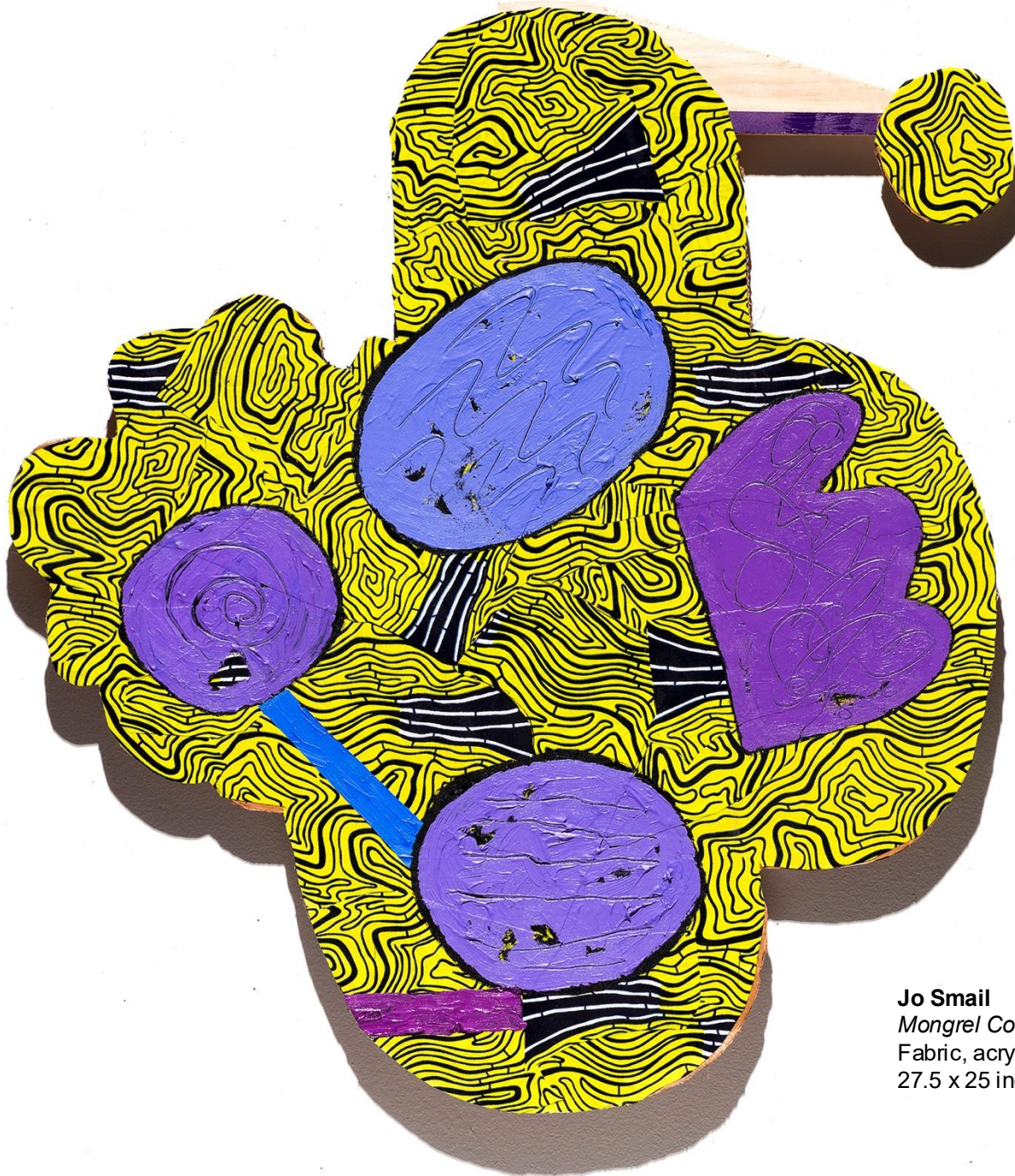
Published by Goya Contemporary / Goya-Girl Press



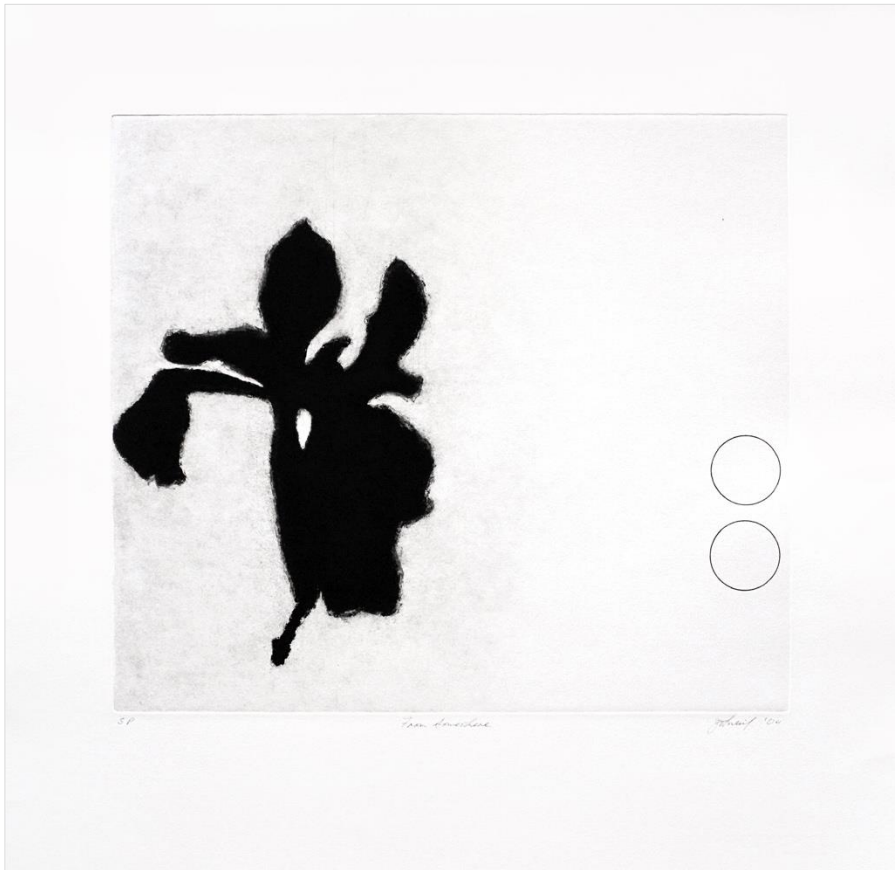
Jo Smail
Mongrel Collection 11, 2018
Fabric, acrylic, cardboard on panel
24 x 14.5 inches



Jo Smail
Mongrel Collection 23, 2018
Fabric, acrylic, cardboard on panel
22 x 18 inches



Jo Smail
Mongrel Collection 27, 2018
Fabric, acrylic, wood, cardboard on panel
27.5 x 25 inches



Jo Smail

From Somewhere, 2004

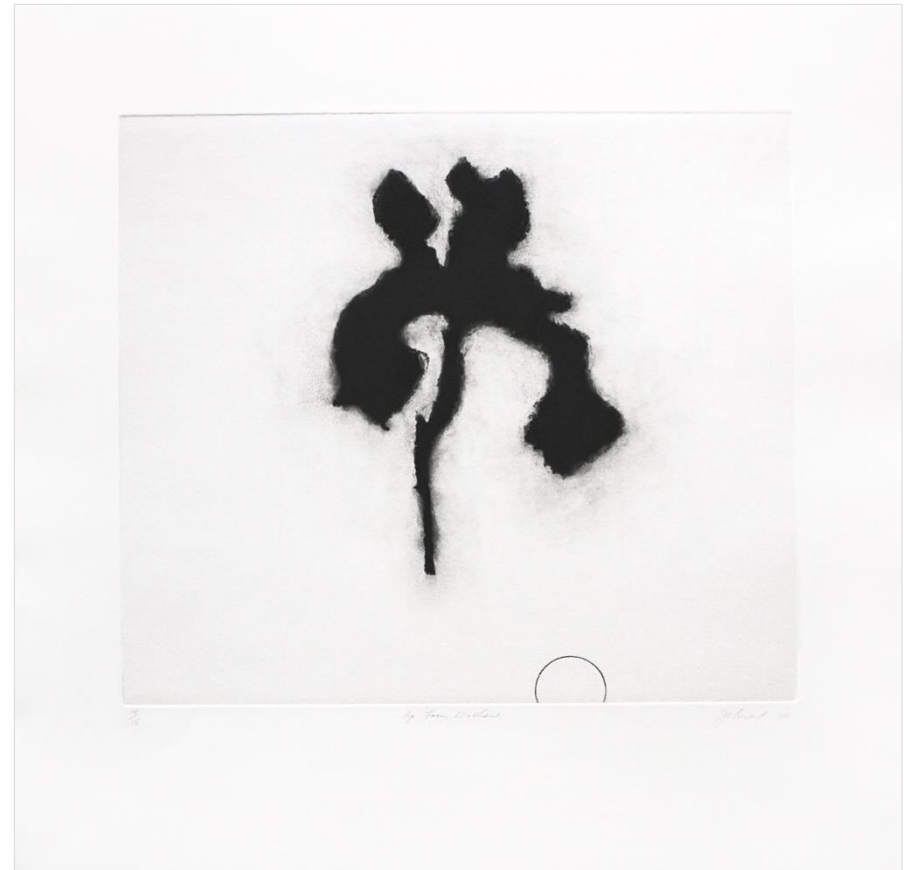
Etching

Paper: 22.5 x 23 inches

Frame: 22.9 x 24.4 inches

Edition of 15

Published by Goya Contemporary / Goya-Girl Press



Jo Smail

Up from Nowhere, 2004

Etching

Paper: 22.5 x 23 inches

Frame: 22.9 x 24.4 inches

Edition of 15

Published by Goya Contemporary / Goya-Girl Press

GOYA CONTEMPORARY
GOYA-GIRL PRESS

IFPDA FAIR

Availability of artworks are not guaranteed and prices are subject to change.

All images are © the Artist and/or Goya Contemporary Gallery.
No image may be used, copied, printed, in any way without permission.

Acquisitions may have loan stipulations and objects may be reserved for museums only.
Please discuss with our team to learn more.

For acquisitions, please contact gallery@goyacontemporary.com
Office: 410-366-2001/ Mobile: 443-850-1015

Goya Contemporary Gallery: Martha Macks, Amy Eva Raehse, Emily Vollherbst, Marian Jackson

3000 Chestnut Avenue, Mill Centre #214, Baltimore, MD 21211
T: 410-366-2001 | www.goyacontemporary.com | gallery@goyacontemporary.com | [@goya_contemporary_gallery](https://www.instagram.com/goya_contemporary_gallery)